



## **SECTION 1**

# **HEALTH AND SAFETY** **MANUAL**

**BS OHSAS 18001: 2007**

**Section: No 1**

**Issue Date: 30/08/2011**

## INTRODUCTION.

In consideration of **BS OHSAS 18001: 2007** Dalair Limited by way of this document seek to demonstrate our commitment towards the continual improvement of the health, safety and welfare for all, and describe how the company manage and maintain our health and safety management system.

We have decided to take on the requirements of the standard to help us minimise and reduce the impact of health and safety issues, which may affect the business. We hope by raising health and safety awareness throughout the company and influencing those who work with us, we will create a positive effect upon health and safety locally and also promote the health and safety culture nationwide to our clients and customers.

## SCOPE.

**The Wednesbury based headquarters is the recognised centre for application, design, contracts and manufacture of air handling units for air conditioning and ventilation systems.** It is supported by two satellite offices, based in London and Manchester, which have been established solely for the support of sales functions within the company to provide Dalair with a presence within these areas that are not included in the management system scope. We also have new premises named, Dalair Technical Centre, based close to HQ with the function of being a stand-alone test facility.

We as a company specialise in the design, manufacture, delivery, installation, service, maintenance, testing and commissioning of Air Handling Equipment. Our products consists of the building of an acoustic housing that incorporates various items of pre-selected equipment, normally fans, motors and filters along with various types of heating, cooling and humidification equipment, that subject to effective control strategies, will enable the final product to deliver an air conditioned environment to the space being served. The installation, site service and maintenance are not currently included in the scope at present but will be added in the near future.

Since its conception in the early 1980's the Company has developed the product in line with both the industry trends and the needs of our customers.

The health, safety and welfare of its employee's and those people who may be affected by our operations or activities is essential within the organization. To meet this requirement the company will operate BS OHSAS 18001:2007 management system to manage its risk management strategy and to address changing legislation. Risk assessment, proactive monitoring, safe systems of work, method statements, training and regular review, will achieve this.

The health and safety management system will cover the Dalair Manufacturing base and Dalair Technical centre.

## **HEALTH AND SAFETY POLICY**

Top Management of Dalair Limited are committed towards an Health and Safety Policy as required under the Health and Safety at Work Act 1974, that fully recognises and accepts its responsibilities to provide a safe and healthy workplace and environment for all its employees and others affected by our business activities.

Dalair Limited is committed to:

- The prevention of possible injury caused by accidents or incidents and cases of work related ill health arising from work activities and the continual improvement of occupational health and safety performance.
- Continual improvement of our OHSAS 18001:2007 management system procedures and controls and that it is measurable by performance.
- Setting key objectives and meeting targets on health and safety issues. These will be reviewed at 6 monthly management reviews.
- Review our health and safety policy every 6 months at management review or if necessary due to change.
- Identifying, controlling and wherever possible reducing or eliminating health and safety risks associated with our activities.
- Put in place measures to protect employees, contractors and visitors from the risks of noise at work.
- Providing a clear definition of health and safety responsibilities throughout the company.
- Identify, manage and review our legal requirements and ensure commitment to compliance with applicable occupational health and safety legislation and all other requirements.
- Training all of our employees on important health and safety matters.
- Ensuring that health and safety concerns are considered when developing and changing business activities, processes and products.
- Ensuring adequate resources are available to fulfil this policy.

We aim to achieve these objectives through hazard identification, risk assessment and by implementing appropriate management controls BS OHSAS 18001:2007. We require, as an integral part of our processes, that the business be operated and managed so as to ensure a high level of protection for the health and safety of our employees, contractors, the public and the environment. We shall continue to integrate health and safety considerations into the business operations.

Responsibilities are defined throughout the organization. Managerial and supervisory roles are responsible for implementing the defined safety arrangements for the areas and activities under their control. The effective implementation of this policy requires the co-operation and active involvement of employees at all levels and in all areas.

Employees are required to:

- Co-operate with the company to ensure compliance with all applicable statutory requirements by working in accordance with the safety management system and standard operating procedures.
- Work safely to ensure their personal health and safety and that of any other persons who could be affected by their acts and omissions.
- Report any areas where the existing safety arrangements fail to reduce risks to an acceptable level.

The Health and Safety Policy is communicated to all persons working for or on behalf of the company. This policy will be displayed at all business addresses, on department notice boards. If amendments are made to the policy, they will be circulated to all accordingly. The policy is available to all external interested parties via our website [www.dalair.co.uk](http://www.dalair.co.uk) or hard copy on request.

The Managing Director, supported by the Health and Safety Manager, will be responsible for implementing and reviewing this policy as well as monitoring the company's health and safety performance.

Mr D.J.Moseley - **Managing Director (Joint)**

Mr P.J.Shore - **Health and Safety Manager**

Signed..... Date: 24<sup>th</sup> MARCH 2011

Signed..... Date: 24<sup>th</sup> MARCH 2011

## **Dalair Limited Work Related Stress Policy**

### **The Law:**

Under the **HEALTH AND SAFETY AT WORK ACT 1974**, employers have a duty to ensure, so far as is reasonably practicable, that their workplaces are safe and healthy. "ill health resulting from stress at work has to be treated in the same way as ill health due to other, physical causes present in the workplace".

### **What is stress?**

The Health and Safety executive defines stress as "the adverse reaction people have to excessive pressures or other types of demand placed upon them. It arises when they worry that they are unable to cope."

### **Stress Management:**

Stress can be good and bad, good when it motivates people and brings out the best in them and bad when it is excessive and beyond the tolerance level of the person suffering from it. The impact of stress varies from individual to individual. What one person finds stimulating may be stressful to the other. The challenge is to maintain a balance. We are all different!

The causes of stress are more often than not a combination of home and work pressures.

Dalair recognise the importance that stress is not seen as a personal problem. Stress is an issue which Directors, Managers, Charge hands and Staff as a whole are committed to addressing.

### **Policy Statement and Commitment:**

Employers need and are entitled to expect their employees to share the responsibility for controlling the harmful effects of stress in the workplace. Employees have a duty to inform their employer of the stress they are suffering or make it obvious that there is an impending harm to their health.

We as the employer recognise that stress can be a considerable risk to both physical and mental health. This policy outlines below the actions the company will take to combat stress related issues in the workplace.

### **The Company undertakes to:**

- Promote a good, open and supportive climate and working culture, where stress is not seen as a personal weakness.
- Increase general awareness of work related stress.
- Provide methods to prevent and combat harmful workplace stress.
- Assist any employee in managing pressure overload.
- Provide appropriate level of training in identifying and managing work related stress.
- Manage problems that occur and provide a confidential counselling service with support.
- Monitor and evaluate work related stress indicators.

To combat stress it requires a partnership between the employee and employer, a partnership based on trust and honesty.

Constant changes and the resultant stress are part of the modern workplace; there is no getting away from this fact. It is how we all respond to the change that makes the difference. We cannot eliminate stress, but collectively we can control it.

Managing Director (Joint)Signed:..... Date...../...../.....

Health And Safety Manager:..... Date...../...../.....

# **Policy on Alcohol, Drug and Substance Abuse at Work**

## **1. Scope**

- 1.1. This policy will apply to all staff and personnel employed by Dalair Limited. Employees working on or off Dalair Limited premises should use the policy and approach as best practice.

## **2. Introduction**

- 2.1. Alcohol, drug or substance abuse affects performance, conduct and relationships at work and at home. Employees who develop a problem may cause harm to themselves or others.
- 2.2. Under the Health and Safety at Work Act (1974), Dalair Limited has a duty to ensure the health, safety and welfare at work of all their employees and other persons, including visitors and contractors, using their own and other premises. The act places a general duty on employees to take reasonable care of their own health and safety and of any other persons who may be affected by their acts or omissions whilst at work.
- 2.3. In addition to the Health and Safety responsibilities, the company is obliged to comply with the Misuse of Drugs Act and notify the police if an employee is found in possession of non-prescribed drugs or to be supplying or producing illegal substances.

## **3. Definition**

- 3.1. Alcohol abuse is defined as a level of drinking which affects an employee's ability to work safely.
- 3.2. Drug or chemical substance abuse is defined as the taking of an illicit substance into the body in an un-prescribed manner.

## **4. Policy**

- 4.1. Each employee on joining the company will receive an induction explaining the company's zero tolerance on alcohol, drug and chemical substance abuse at work.
- 4.2. This is explained in the employee's contract of employment (Terms and Conditions). If an employee reports for work under the influence of non-prescribed drugs or alcohol this is regarded as gross misconduct. The employee will not start work and will be suspended, at which point a full investigation will take place. Following the investigation, it may result in the employee being dismissed without notice. Any investigation required will be carried out in line with the company dismissal and disciplinary procedures.
- 4.3. The misuse of alcohol, drugs or chemical substances does not exonerate an individual from the results of their actions or from disciplinary action.
- 4.4. Every employee must notify the company of any prescribed drugs they are taking for any medical conditions.
- 4.5. If a line manager believes a member of staff is under the influence of alcohol, drugs or has substance abused, he will then initially speak to the member of staff concerned to check they haven't taken either a prescribed drug that is creating a side-effect or are seriously ill. If neither is the case, the line manager should call a senior manager to witness the behaviour leading to them being concerned before considering suspension.
- 4.6. The company policy is that the consumption of alcohol, the taking of illegal drugs or chemical substance abuse or being under the influence of either whilst at work is a dismissable offence, irrespective of whether a specific incident or accident has occurred.

## **5. The Role Of The Line Manager**

- 5.1. Although every employee has a responsibility to help, the key individual in identifying an employee as possibly having a drink, drug or substance abuse problem is the line manager. There are a number of symptoms of such abuse, which the line manager is best placed, because of his own responsibilities, to observe.

For example: -

a) Work performance

- Lower productivity
- Spasmodic work pace
- Poor concentration and quality of work
- High level of mistakes and errors in judgement
- Become quickly fatigued
- Begins to lie about work performance

b) Absenteeism

- Increased frequency of days off
- Repeated absence on first and last days of rostered work
- Increases minor illnesses
- Frequently late for work
- Often fabricating reasons for leaving work early
- Unexplained disappearances from the job

c) Changes in behaviour or personality

- Neglect of details
- Tendency to blame others for shortcomings
- Sensitivity about references to drinking
- Avoidance of senior staff
- Intolerant and verbose
- Increased nervousness, hand tremors
- Swelling or flushing of the face

d) Accidents

- Frequent injuries
- Increased time off due to accidents
- Careless handling and safe methods of work
- Lack of common safety sense

5.2. If a line manager does identify an employee as having any of the above problems, he will follow the company policy as stated in section 4 of this document.

6. **The aims of The Policy are to: -**

- Promote awareness and prevent the consumption of alcohol or the use of drugs or chemical substance abuse by company employees.
- Indicate to employees that it is gross miss-conduct to arrive at work under the influence of any of the above substances. (Which could result in the termination of their employment).
- For line managers to be pro-active in identifying any signs of substance abuse.
- Safeguard all employees and anyone who may be affected by a person's action under the influence of such substances, which may compromise health and safety.
- Ensure health and safety standards are met for those employees who represent the company off site and maintain high standards of health and safety for the client.

Signature:...../ Managing Director. (Joint)

Date:...../...../.....

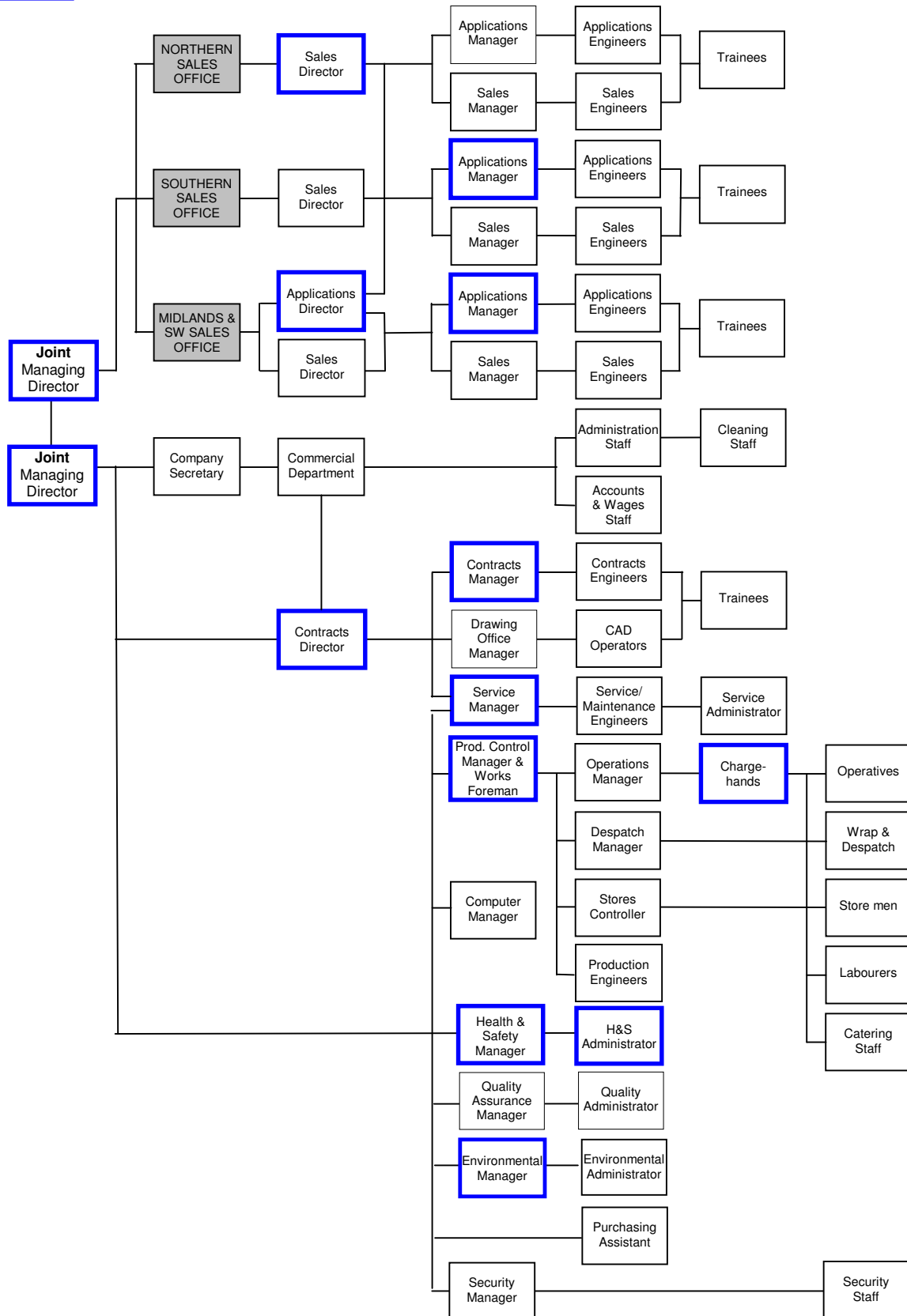
Signature:...../ Health And Safety Manager.

Date:...../...../.....

# ORGANISATION CHART (Family Tree)



Quality Team



## Health and Safety Roles and Responsibilities.

**Joint Managing Directors:** Top Management hold ultimate responsibility for the company's Health and Safety management systems. They will ensure availability of resources to establish, implement, maintain and continually improve the Health and Safety management system to BS OHSAS 18001:2007. They will lead the company to ensure objectives targets and programmes are achieved.

**Applications / Contracts / Sales Directors:** Company Directors roles are to lead their respective departments through the Health and Safety management systems created by the Health and Safety team. It is their responsibility to ensure procedure compliance and input / see through the company's objectives, targets and programmes.

**Applications, Contracts, Drawing Office, Production Managers:** Company Managers are to ensure compliance to procedure, collect monitor and measurement data and feed back into management review.

**Site / Service Manager:** To manage the site / service team in accordance with the set health and safety policy and procedures. Sub-contractors on site acting for or on behalf of the company are under his control.

**Production Control Manager:** Is responsible for ensuring that all front line managers, section leaders and shop floor staff are fully aware of the Health and Safety systems in place to work safely during the manufacturing processes and that adherence is applied. He has responsibility for the control of all works activities that may impact on health and safety and is to feed back data to the Health and Safety Manager and also to the management review, ultimately for the company's objectives targets and programmes to be reviewed.

**Health & Safety Manager:** He is responsible for ensuring compliance with all relevant health and safety legislation. He is responsible for all associated risk assessments and documentation and regular review. He is jointly responsible for safe systems of work and procedure's during the manufacturing stages, and that all health and safety issues are considered and adhered to. Monitor and measurement data is under his control with feed back into management review. The Health and Safety Manager will monitor closely all emergency preparedness and response controls. He has been given full responsibility to establish, document, implement, maintain and continually improve an health and safety management system to BS OHSAS 18001:2007. He has the authority to amend health and safety procedure and processes with the assistance and consultation with the health and safety team and top management. Analysis of data shall be under his guidance, with review fed back to Top Management. He will lead the management systems in accordance with the company's objectives targets and programmes.

**Line Managers and Section Leaders:** Are responsible for ensuring that the health, safety and welfare of the staff under their supervisory control is adhered to and they are working safely in accordance with the safe systems of work and the BS OHSAS 18001:2007 management system. They must report back to The Production Control Manager or the Health and Safety manager if they cannot work safely due to unsafe acts or conditions that will impact on employee's health, safety and well-being.

**All employees:** Are responsible and required to co-operate with the company to ensure compliance with applicable statutory requirements by working in accordance with the health and safety management system and standard operating procedures. To work safely to ensure their health and safety and that of any other persons who could be affected by their acts and omissions. To report any areas where the existing health and safety arrangements fail to reduce risks to an acceptable level.

**Lead Auditors:** The Health & Safety Manager is defined as the lead auditor of the systems. He will be qualified to a recognised standard and competent to carry out audits alone.

**Auditors:** All auditors shall receive external training given by an approved service provider. When a level of competence has been achieved, they will be able to carry out audits under the supervision of lead auditors.

<b><u>DEFINITIONS:</u></b>	
<b>HAZARD</b>	Source or situation with a potential for harm in terms of injury or illness, damage to property, damage to the environment, or a combination of these.
<b>RISK</b>	Combination of the likelihood and consequence (s) of a specified undesirable health, safety, welfare or environmental event occurring.
<b>ABNORMAL CONDITIONS</b>	Unplanned or unexpected conditions that are not part of the organisation's operating plan.
<b>NORMAL CONDITIONS</b>	Conditions that are a known or anticipated part of an organisations activities or operating plan.
<b>EMERGENCY CONDITIONS</b>	An unexpected situation or sudden occurrence of a serious and urgent nature that demands immediate action.
<b>SIGNIFICANT HEALTH AND SAFETY RISKS</b>	Risks that, without consideration of controls, are the most likely to cause serious impacts such as injury or illness, fatalities, significant environmental issues, regulatory violations or enforcement actions, and / or major asset, product or business loss.
<b>RISK ASSESSMENT</b>	A systematic approach used to determine the degree or risk or vulnerability associated with identified hazards. The process includes assessment of the likelihood and consequences of a hazard resulting in an undesirable health or safety event such as fatality, injury or regulatory violation.
<b>CONTRACTOR</b>	Any non - Dalair employee doing work for Dalair, whether on or off Dalair property.
<b>ORGANISATION</b>	The entity for which the health and safety management system applies. For purposes of complying with the BS OHSAS 18001: 2007 standard.
<b>PROCEDURE</b>	A formal and documented combination of methods, steps and actions established by the organisation to achieve specific results, behaviour or activity.
<b>STAKEHOLDER</b>	Person or persons significantly impacted or potentially impacted by the organisations operations. These may include employees, customers, neighbours, emergency responders, other industries, the public, government authorities and regulators, or anyone else with a significant personal interest in the organisation's operations.
<b>NONCONFORMITY</b>	Non- fulfilment of a requirement.
<b>PREVENTATIVE ACTION</b>	Action to eliminate the cause of a potential nonconformity or any other undesirable potential situation that may occur.
<b>CORRECTIVE ACTION</b>	This action is taken to prevent any recurrence of an undesirable situation.
<b>WORKPLACE</b>	Any physical location in which work related activities are performed under the control of the organisation.

## HEALTH AND SAFETY DOCUMENTS INDEX

<u>REFERENCE</u>	<u>PAGE No.</u>	<u>DOC.S</u>
<b>1. HEALTH AND SAFETY MANUAL</b>		
• Introduction / Scope	1	1/1
• Dalair Health and Safety Policy	1 – 2	1/2
• Dalair Work Related Stress Policy	1 - 2	1/3
• Policy On Drug / Alcohol And Substance Abuse At Work.	1 – 3	1/4
• Organisation Flow Chart	1	1/5
• Health and Safety Roles and Responsibilities.	1	1/6
• Health and Safety Definitions	1	1/7
• Health and Safety Sections Flow Chart	1	1/8
• Procedures Interaction with Standard	1 - 3	1/9
• Procedure/Operational Document Index	1 – 3	1/10
<b>2. LEGAL REQUIREMENTS</b>		
• Health and Safety Legal Procedure	1	2
• Legal Register Quarterly Check	1	2/1
• Legal Requirements Flow Chart	1	2/2
• Health and Safety Legal Register	1- 42	2/3
<b>3. HAZARD IDENTIFICATION AND RISK ASSESSMENT (Manufacturing Base)</b>		
• Hazard and Risk Assessment Procedure	1-3	3
• Fabrication Department	1	3/1
• Raw Material Storage	1- 2	3/1/1
• Cutting Process	1- 2	3/1/2
• Press Process	1	3/1/3
• Drilling Process	1- 2	3/1/4
• Welding Process	1- 3	3/1/5
• Cleaning Process	1- 2	3/1/6
• Powder Coating Process	1- 3	3/1/7
• Wet Spray	1- 2	3/1/8
• Panel Process	1	3/2
• Raw Material Storage	1- 2	3/2/1
• Cutting Process	1- 3	3/2/2
• Punching Process	1- 2	3/2/3
• Notching Process	1	3/2/4
• Pressing Process	1- 2	3/2/5
• Stiffener Cutting Process	1- 2	3/2/6
• Panel Assembly Process	1	3/2/7
• Insulation Process	1- 5	3/2/8
• Door Furniture Assembly	1	3/2/9
• Fan Base Assembly	1	3/3
• Supply Process	1	3/3/1
• Cutting Process	1- 3	3/3/2
• Fan Base Assembly Process	1- 3	3/3/3
• Fan Base Manufacturing Process	1	3/3/4
• Powder Coating Process	1	3/3/5
• Final Assembly	1	3/3/6
• Main Assembly Process	1	3/4
• Assembly Process Plant	1	3/4/1
• Assembly Aluminium Storage Area	1	3/4/2
• Cutting Process	1	3/4/3
• Notching Process	1	3/4/4
• Frame and Top Hat Process	1- 2	3/4/5

• Frame and Panel to AHU Base	1- 2	3/4/6
• Door and Panel Process	1	3/4/7
• Top Section Process	1- 2	3/4/8
• Internal Fitting Process	1- 3	3/4/9
• External Fitting Process	1- 2	3/4/10
• Stores and Plant Process	1	3/5
• Goods Inward Process	1- 3	3/5/1
• Storage and Location Process	1- 3	3/5/2
• Material and Plant Issue	1- 2	3/5/3
• Despatch Process	1	3/6
• Cleaning Process	1- 3	3/6/1
• Packing and Wrapping	1- 2	3/6/2
• Storage and Loading Process	1- 3	3/6/3
• Electrical Department	1- 2	3/7
• Individual Operational Controls		
• Baler 8020 Machine	1- 2	3/8
• Gas Storage Areas	1	3/8/1
• Gas Bulk Storage	1	3/8/2
• Air Handling Unit Testing	1- 4	3/8/3
• Use Of Equipment Which Could Result In (Hand Arm Vibration Syndrome).	1- 3	3/8/4
• Pipe Threading Machine Rigid 300	1- 2	3/8/5
• Evolution 230 Circular Saw	1	3/8/6
• Powered Pallet Trucks	1	3/8/7
• Propane Space Heaters	1- 5	3/8/8
• Mobile Elevated Work Platform	1	3/8/9
• Mezzanine Floor Storage Area	1- 5	3/8/10
• Display Screen Equipment	1	3/8/11
• Powder Plant Manual Handling	1	3/8/12
• Site Risk Assessment Summary 1	1	3/8/13
• Site Risk Assessment Summary 2	1	3/8/13
• Young Persons	1	3/8/14
• Expectant Mothers	1	3/8/15
• Driving At Work	1-2	3/8/16
• Food Hygiene	1-2	3/8/17
• General Maintenance	1-6	3/8/18
• Amada Press Maintenance	1	3/8/19
• Pressure Systems Maintenance	1	3/8/20
• Industrial Safety Inspections	1	3/8/21
• Foam Injection Maintenance	1	3/8/22
• Site Security	1-4	3/8/23
• Office Operational Controls (Head Office)	1- 9	3/9

#### 4. **SAFE SYSTEMS OF WORK (Operational Controls)**

• Safe System Of Work Procedure	1	4
• Foam Injection Process	1	4/1
• Operation Of Guillotines	1- 2	4/2
• Lifting Cages	1- 2	4/3
• Work Platform/Step Ladder	1- 4	4/4
• Evolution Saw 230	1- 3	4/5
• Brake Press/Press Tool	1- 2	4/6
• Band Saw's F2 and F14	1- 3	4/7
• Pedrozzoli Aluminium Saw FA5	1- 4	4/8
• Powder Coating and Gas Fired Ovens	1- 3	4/9

• Mig and Tig Welding	1- 3	4/10
• Fall Arrest Systems	1- 4	4/11
• Draper 315mm Wood Saw	1- 3	4/12
• Ripak Heat Gun and Propane	1- 3	4/13
• Propane Space Heaters	1- 3	4/14
• AHU Testing Procedures	1	4/15
• Mobile Elevated Work Platform	1- 4	4/16
• The Carriage of LPG Cylinders By Road	1- 2	4/17
• Procedure for re-fuelling Propane Cylinders from the Gas Bulk Storage	1- 2	4/18
• Volumetric/Acoustic/Pressure Testing	1- 2	4/19
• Hot Work Permit	1- 2	4/20
• Amada Press	1	4/21
• Confined Space Permit To Work	1- 2	4/22
• Ductwork Removal From Storage	1- 3	4/23

5. **COSHH RISK ASSESSMENTS (Head Office and Manufacturing Base).**

• COSHH Risk Assessment Procedure	1	5
• COSHH Risk Assessment Register	1 to 38	5/1 to 5/40, 5/54 to 5/56
• COSHH Data Sheet Review Document	1	5/41
• COSHH Revision Status of Safety Data Sheet.	1	5/42
• COSHH Data Sheet Issue Register	1	5/43
• COSHH Data/Risk Index (Fan)	1	5/44
• COSHH Data/Risk Index (FaB)	1	5/45
• COSHH Data/Risk Index (Panels)	1	5/46
• COSHH Data/Risk Index (Despatch)	1	5/47
• COSHH Data/Risk Index (Stores)	1	5/48
• COSHH Data/Risk Index ( Main Stores)	1	5/49
• COSHH Data/Risk Index ( Offices)	1	5/50
• COSHH Hazardous Material Index	1	5/51
• Hazardous Material Plan (Internal)	1	5/52
• Hazardous Material Plan (External)	1	5/53

6. **EMERGENCY PREPAREDNESS AND RESPONSE (Head Office and Manufacturing Base)**

• Emergency contact	1	6/20
• Emergency contact flow chart 1	1	6/21
• Emergency contact flow chart 2	1	6/22
• Emergency Preparedness Procedure	1	6/23
• Emergency Preparedness Flow Chart 1	1	6/24
• Emergency Testing Report	1	6/25
• Fire Plan Procedure	1- 2	6/1
• Fire Plan Procedure Flow Chart	1	6/2
• Visitors Code Of Practice	1	Rev G
• Panel Section Assessment	1- 2	6/3
• Fabrication and Welding Dep't Fan Assembly Area	1- 4	6/4
• Main Assembly Area	1- 2	6/5
• Stores and Plant Dep't	1- 3	6/6
• Despatch Department	1- 3	6/7
• Electrical Department	1	6/8
• Main Service and Yard Storage Area	1- 4	6/9
• Main Office Building	1- 2	6/10
• Kitchen and Canteen Area	1	6/11
• Shop Floor and Office Fire Plan (Scaled Layout Drawings).	1	6/12
• Disposal Procedures For Combustible Waste Materials.	1- 9	6/13
• Additional Fire Procedures For The Newman Building. Scaled Floor Plan Drawings Of The Newman Building, Showing Fire Exits And Fire Point Locations.	1- 4	6/14
• Fire Extinguisher Inspection Document	1	6/15

• Fire Exit Inspection Document	1	6/18
• Emergency Lighting Inspection Schedule Document.	1	6/19
• Fire Evacuation Sweep Areas	1	6/33
<b>• <u>First Aid Emergency Plan</u></b>		
• First Aid Procedure For Accidents Involving Injury.	1- 2	6/26
• First Aid Risk Assessments	1- 4	6/27
• First Aid Responsibilities	1	6/28
• First Aid Accident / Incident Report	1	6/29
• Accident & Dangerous Occurrence Log	1	6/30
• RIDDOR Reportable Accident Document	1	6/31
• First Aid Regulation Header	1	6/32
• First Aid Procedure Flow chart	1	6/34

#### 7. HAZARD IDENTIFICATION AND RISK ASSESSMENT (Technical Centre)

• Hazard Identification Procedure	1- 3	7
• Office Area	1- 2	7/1
• Factory, Working At Height	1- 2	7/2
• Fork Lift Trucks	1	7/3
• Hand Held Tools – Air and Electric	1	7/4
• Manual Handling	1	7/5
• Sealants	1	7/6
• Environmental Issues	1- 4	7/7
• Welfare Facilities	1- 2	7/8
• Transportation and Storage of AHU'S	1- 2	7/9
• Air Handling Unit Testing	1- 5	7/10
• Ductwork Removal From Storage	1- 2	7/11

#### 8. COSHH RISK ASSESSMENT (Technical Centre)

• COSHH Risk Assessment Procedure	1	8
• COSHH Risk Assessment Register	1- 13	8/1 to 8/11
• COSHH Data Sheet Review Document	1	8/12
• COSHH Revision Status of Safety Data Sheets.	1	8/13
• COSHH Risk Assessment Index	1	8/16
• COSHH Risk Assessment Polyethene	1	8/17

#### 9. EMERGENCY PREPAREDNESS AND RESPONSE (Technical Centre)

• Emergency Contact Procedure	1	9/29
• Emergency Preparedness Procedure	1	9/27
• Emergency contact flow chart 1	1	9/30
• Emergency contact flow chart 2	1	9/31
• Emergency Preparedness Flow Chart 1	1	9/28
• Emergency Testing Report	1	9/32
• Fire Plan Procedure	1- 2	9/1
• Fire Plan Procedure Flow Chart	1	9/2
• Visitors Code Of Practice	1	Rev G
• Contractors Code Of Practice	1	Rev C
• Main Reception Area	1	9/3
• Canteen Facility	1	9/4
• Main Reception Stairs	1	9/5
• First Floor Main Office	1	9/6
• Chairman's Office First Floor	1	9/7
• Boardroom Office First Floor	1	9/8
• Factory Mezzanine Floor Office	1	9/9
• Stores Area	1	9/10
• Men's Toilet and Washroom Facility	1	9/11
• First Aid Room	1	9/12
• Ladies Toilet and Washroom	1	9/13
• Site Service Office	1	9/14
• Main Floor Test, Assembly and Storage Area.	1- 3	9/15

	• Main Test Area (Annex)	1	9/16
	• Security Office	1	9/17
	• Main Service Yard and Car Park	1- 2	9/18
	• Security Gates on Fire Exits	1	9/19
	• Fire Extinguisher Inspection Document	1	9/20
	• Fire Exit Inspection Document	1	9/21
	• Emergency Lighting Inspection Schedule Document.	1	9/22
	• <b>First Aid Emergency Plan</b>		
	• First Aid Regulations	1	9/23
	• First Aid Procedure	1- 2	9/24
	• First Aid Responsibilities For Accidents Involving Injury.	1- 5	9/25
	• First Aid Regulation Header	1	9/26
	• First Aid Procedure Flow Chart	1	9/33
10.	<b>COMMUNICATION</b>		
	• Communication Procedure	1- 2	10
	• Communications Flow Chart 1	1	10
	• Communications Flow Chart 2	1	10
	• Communications Log	1	10/1
	• Verbal Communications	1	10/2
	• Complaint Action Report	1	10/3
	• Objectives, Targets & Programmes	1	10/5
	• Control of Visitors and Contractors	1	10/6
	• Visitors Flow Chart	1	10/8
	• Contractors Flow Chart	1	10/9
	• Contractors Induction Checklist	1	10/10
	• Participation and Consultation Procedure	1	10/11
	• Employee Safety Committee Members	1	10/12
	• Employee Safety Committee Agenda	1	10/13
	• Employee Safety Committee Actions	1	10/14
11.	<b>NON-CONFORMANCE</b>		
	• Non-Conformance Procedure	1	11
	• Non-Conformance Flow Chart	1	11/1
	• Non-Conformance Note	1	11/2
	• Employee Non-Compliance Procedure	1- 2	11/3
12.	<b>CORRECTIVE ACTION &amp; PREVENTIVE ACTION</b>		
	• Corrective/Preventative Action Procedure	1	12
	• Corrective Action Flow Chart	1	12/1
	• Corrective Action Monitoring Sheet	1	12/2
	• H&S Root Cause Non- Conformance	1	12/3
13.	<b>TRAINING</b>		
	• Health and Safety Training Procedure	1	13
	• Training Flow Chart	1	13/1
	• Training Instruction Record	1	13/2
	• Employee Training Record Matrix	1	13/3
	• Training Planner	1	13/4
	• Training Needs Matrix	1	13/5
	• Training Awareness Acceptance Sheet	1	13/6
	• Induction Checklist	1- 3	13/7
	• H&S Accreditations File	1	13/8

14.	<b>DOCUMENT CONTROL</b>		
	• Document Control Procedure	1	14
	• Document Control Authorities	1	14/1
	• Document Control Flow Chart	1	14/2
	• Document Displayed List	1	14/3
	• Document Amendment Notification	1	14/4
15.	<b>CONTROL OF RECORDS</b>		
	• Control of Records Procedure	1	15
	• H&S Controlled Records List	1- 6	15/1
16.	<b>INTERNAL AUDITS</b>		
	• Internal Audit Procedure	1	16
	• Internal Audit Flow Chart	1	16/1
	• Audit Schedule	1	16/2
	• Audit Summary Report	1	16/3
	• H&S Improvement Note	1	16/4
17.	<b>PERFORMANCE MEASURING AND MONITORING</b>		
	• Measuring and Monitoring Procedure	1	17
	• Measuring and Monitoring Flow Chart 1	1	17/1
	• Eye Wash Station Inspection	1	17/2
	• Mobile Elevated Platforms	1- 2	17/3
	• Step Ladder and Podium	1	17/4
	• Fall Arrest Equipment	1- 2	17/5
	• Provision of Work Equipment PUWER	1	17/6
	• Fork Lift Truck Inspection	1- 2	17/7
	• Fork Lift Defective Action Report	1	17/8
	• Gas Equipment and Regulator	1	17/9
	• Pedestrian Truck Inspection	1	17/10
	• Hearing Protection Inspection	1	17/11
	• Weekly Sampling Inspection	1	17/12
	• Fall Arrest Equipment Inspection	1	17/13
	• Hearing Protection Issue/ Inspection	1	17/14
	• Personal Protective Equipment Issue	1	17/15
	• Return To Work Form	1	17/16
	• Gas Regulator Reference and Expiry	1	17/17
	• Inspection Sheet Issue & Location	1	17/18
	• Sampling Inspection Checklist	1	17/19
18.	<b>ACCIDENT/ INCIDENT INVESTIGATION</b>		
	• Accident Investigation Procedure	1	18
	• Accident/Incident Flow Chart 1	1	18/1
	• Accident Investigation Report Form	1	18/2
19.	<b>PURCHASING PROCEDURE</b>		
	• H&S Purchasing Procedure	1	19
20.	<b>MANAGEMENT REVIEW</b>		
	• Management Review Procedure	1	20
	• Management Review Agenda	1	20/1
	• Management Review Flow Chart 1	1	20/2
	• Management Review Action List	1	20/3
	• Management Committee Members	1	20/4

<b>Health and Safety Procedures</b>	<b>Interaction with H&amp;S standard</b>		
Health And Safety Manual	<b>1</b>	4.2 4.2 4.2 4.3.1 4.3.2 4.3.3 4.4.1 4.4.2 4.4.3 4.4.6 4.4.7 4.5.3 4.5.5 4.5.1 4.6	Health and Safety Policy Stress Policy Drugs, Alcohol And Substance Abuse Policy Hazard Identification and Risk Assessment Legal & Other Requirements Objectives, Target & Programmes Resources, Roles and Responsibilities Competence, Training & Awareness Communication Operational Controls Emergency Preparedness & Response Nonconformity, Corrective & Preventive Action. Internal Audits Performance Measurement and Monitoring Management Review
Legal Requirements	<b>2</b>	4.2 4.3.2 4.4.2 4.4.6 4.4.7 4.5.2 4.5.3 4.5.4 4.5.5 4.6	Health and Safety Policy Legal & Other Requirements Competence, Training & Awareness Operational Control Emergency Preparedness & Response Evaluation of Compliance Nonconformity, Corrective & Preventive Action. Control of Records Internal Audits Management Review
Factory And Office Operational Controls (Manufacturing)	<b>3</b>	4.3.1 4.3.2 4.4.1 4.4.2 4.4.3 4.4.6 4.4.7 4.5.3 4.4.4 4.5.4	Hazard Identification and Risk Assessment Legal & Other Requirements Resources, Roles, Responsibility & Authority Competence, Training & Awareness Communication Operational Control Emergency Preparedness & Response Incident Investigation, Non- Conformity, Corrective Action. Document Control Control of Records
Safe Systems Of Work Operational Control	<b>4</b>	4.3.2 4.4.1 4.4.2 4.4.6 4.4.7 4.5.4 4.5.3	Legal & Other Requirements Resources, Roles, Responsibility & Authority Competence, Training & Awareness Operational Control Emergency Preparedness & Response Control of Records Non – Conformity, Corrective Action
Operational Controls for Substances Hazardous to Health (COSHH) (Manufacturing)	<b>5</b>	4.3.2 4.4.1 4.4.2 4.4.6 4.4.7 4.5.4 4.4.3 4.5.3 4.4.4	Legal & Other Requirements Resources, Roles, Responsibility & Authority Competence, Training & Awareness Operational Control Emergency Preparedness & Response Control of Records Communication Non – Conformity, Corrective Action Document Control

Emergency Preparedness & Response (Manufacturing Base and Head Office)	<b>6</b>	4.4.7 4.4.1 4.4.2 4.4.6 4.4.4 4.5.3 4.5.4 4.6	Emergency Preparedness & Response Resources, Roles, Responsibility & Authority Competence, Training & Awareness Operational Control Document Control Non – Conformity, Corrective Action Control of Records Management Review
Technical Centre Operational Controls	<b>7</b>	4.3.1 4.3.2 4.4.1 4.4.2 4.4.3 4.4.6 4.4.7 4.5.3 4.4.4 4.5.4	Hazard Identification and Risk Assessment Legal & Other Requirements Resources, Roles, Responsibility & Authority Competence, Training & Awareness Communication Operational Control Emergency Preparedness & Response Incident Investigation, Non- Conformity, Corrective Action. Document Control Control of Records
Technical Centre Operational Controls For the Control of Substances Hazardous to Health (COSHH)	<b>8</b>	4.3.2 4.4.1 4.4.2 4.4.3 4.4.6 4.4.7 4.5.4 4.5.3 4.4.4	Legal & Other Requirements Resources, Roles, Responsibility & Authority Competence, Training & Awareness Communication Operational Control Emergency Preparedness & Response Control of Records Non – Conformity, Corrective Action Document Control
Emergency Preparedness and Response (Technical Centre)	<b>9</b>	4.4.7 4.4.1 4.4.2 4.4.6 4.4.4 4.5.3 4.5.4 4.6	Emergency Preparedness & Response Resources, Roles, Responsibility & Authority Competence, Training & Awareness Operational Control Document Control Non – Conformity, Corrective Action Control of Records Management Review
Communication	<b>10</b>	4.4.3 4.2 4.3.2 4.3.3 4.4.1 4.4.2 4.4.6 4.4.7 4.5.3 4.5.4 4.6	Communication Health and Safety Policy Legal & Other Requirements Objectives, Target & Programmes Resources, Roles, Responsibility & Authority Competence, Training & Awareness Operational Control Emergency Preparedness & Response Non- Conformance, Corrective and Preventative Actions. Control Of Records Management Review
Health and Safety Non-conformance	<b>11</b>	4.5.3 4.4.2 4.4.3 4.4.6 4.4.7 4.5.2 4.5.5 4.6	Non-conformity, Corrective & Preventive Action. Competence, Training & Awareness Communication Operational Control Emergency Preparedness & Response Evaluation of Compliance Internal Audits Management Review

Corrective & Preventive Action	<b>12</b>	4.5.3 4.3.2 4.4.3 4.4.1 4.4.2 4.4.3 4.4.5 4.4.6 4.4.7 4.5.1 4.5.5 4.6 4.5.4	Nonconformity, Corrective & Preventive Action Legal and Other Requirements Objectives and Targets Resources, Roles, Responsibility & Authority Competence, Training & Awareness Communication Control of documents Operational Control Emergency Preparedness & Response Monitoring & Measurement Internal Audits Management Review Control of Records
Training	<b>13</b>	4.4.2 4.4.1 4.4.3 4.6	Competence, Training & Awareness Resources, Roles, Responsibility & Authority Communication Management Review
Document Control	<b>14</b>	4.1 4.4.4 4.4.5	General Requirements Documentation Control of Documents
Control of Records	<b>15</b>	4.5.4	Control of Records Management System Requirement
Internal Audits	<b>16</b>	4.3.2 4.5.2 4.5.4 4.5.5 4.6 4.5.3	Legal & Other Requirements Evaluation of Compliance Control of Records Internal Audits Management Review Nonconformity, Corrective & Preventive Action
Performance Measuring and Monitoring.	<b>17</b>	4.5.1 4.4.2 4.3.2 4.5.4 4.4.5 4.5.3 4.4.6 4.4.7 4.6	Performance Measuring and Monitoring Competence, Training & Awareness Legal & Other Requirements Control of Records Control of Documents Non-Conformity, Corrective & Preventive Action Operational Controls Emergency Preparedness and Response Management Review
Incident Investigation	<b>18</b>	4.5.3 4.5.3 4.3.2 4.4.3 4.4.4 4.5.4 4.6 4.4.1	Incident Investigation Non-Conformity, Corrective & Preventive Action Legal & Other Requirements Communication Documentation Control of Records Management Review Rolls and Responsibilities, Accountability and Authority.
Purchasing	<b>19</b>	4.4.6	Operational Controls

Management Review	<b>20</b>	4.6 4.5.3 4.5.3 4.3.2 4.4.3 4.4.4 4.4.5 4.5.3 4.4.7 4.5.1 4.5.5 4.4.3	Management Review Incident Investigation Non-Conformity, Corrective & Preventive Action Legal & Other Requirements Communication Documentation Control of Records Competence, Training & Awareness Emergency Preparedness & Response Monitoring & Measurement Internal Audits Objectives and Targets
-------------------	-----------	--	---



## CERTIFICATE OF APPROVAL

This is to certify that the Occupational Health & Safety Management System  
of:

**Dalair Limited  
Wednesbury, West Midlands  
United Kingdom**

has been approved by Lloyd's Register Quality Assurance  
to the following standard:

**OHSAS 18001:2007**

The Occupational Health & Safety Management System is applicable to:

**Activities associated with the application design  
and manufacture of air handling units for air  
conditioning and ventilation systems.**

This certificate is valid only in association with the certificate schedule bearing the same  
number on which the locations applicable to this approval are listed.

Approval  
Certificate No: LRQ 4006575

Original Approval: 5 October 2011

Current Certificate: 5 October 2011

Certificate Expiry: 4 October 2014

  
Issued by: Lloyd's Register Quality Assurance Limited



001

This document is subject to the provision on the reverse  
71 Fenchurch Street, London EC3M 4BS United Kingdom. Registration number 1879370  
This approval is carried out in accordance with the LRQA assessment and certification procedures and monitored by LRQA.  
The use of the UKAS Accreditation Mark indicates Accreditation in respect of those activities covered by the Accreditation Certificate Number 001  
Macro Revision 1.3

## CERTIFICATE SCHEDULE

### **Dalair Limited Wednesbury, West Midlands United Kingdom**

#### **Head Office**

Southern Way  
Wednesbury, West Midlands  
United Kingdom

#### **Activities**

Activities associated with the application design and manufacture of air handling units for air conditioning and ventilation systems.

#### **Locations**

Technical Centre, Blakeley Wood Road  
Tipton, West Midlands  
United Kingdom

Storage and testing of air handling units for air conditioning and ventilation systems.

Approval  
Certificate No: LRQ 4006575

Original Approval: 5 October 2011

Current Certificate: 5 October 2011

Certificate Expiry: 4 October 2014

Page 1 of 1



001

Approval Certificate No: LRQ 4006575

This document is subject to the provision on the reverse

71 Fenchurch Street, London EC3M 4BS United Kingdom. Registration number 1879370

This approval is carried out in accordance with the LRQA assessment and certification procedures and monitored by LRQA.

The use of the UKAS Accreditation Mark indicates Accreditation in respect of those activities covered by the Accreditation Certificate Number 001

Macro Revision 13